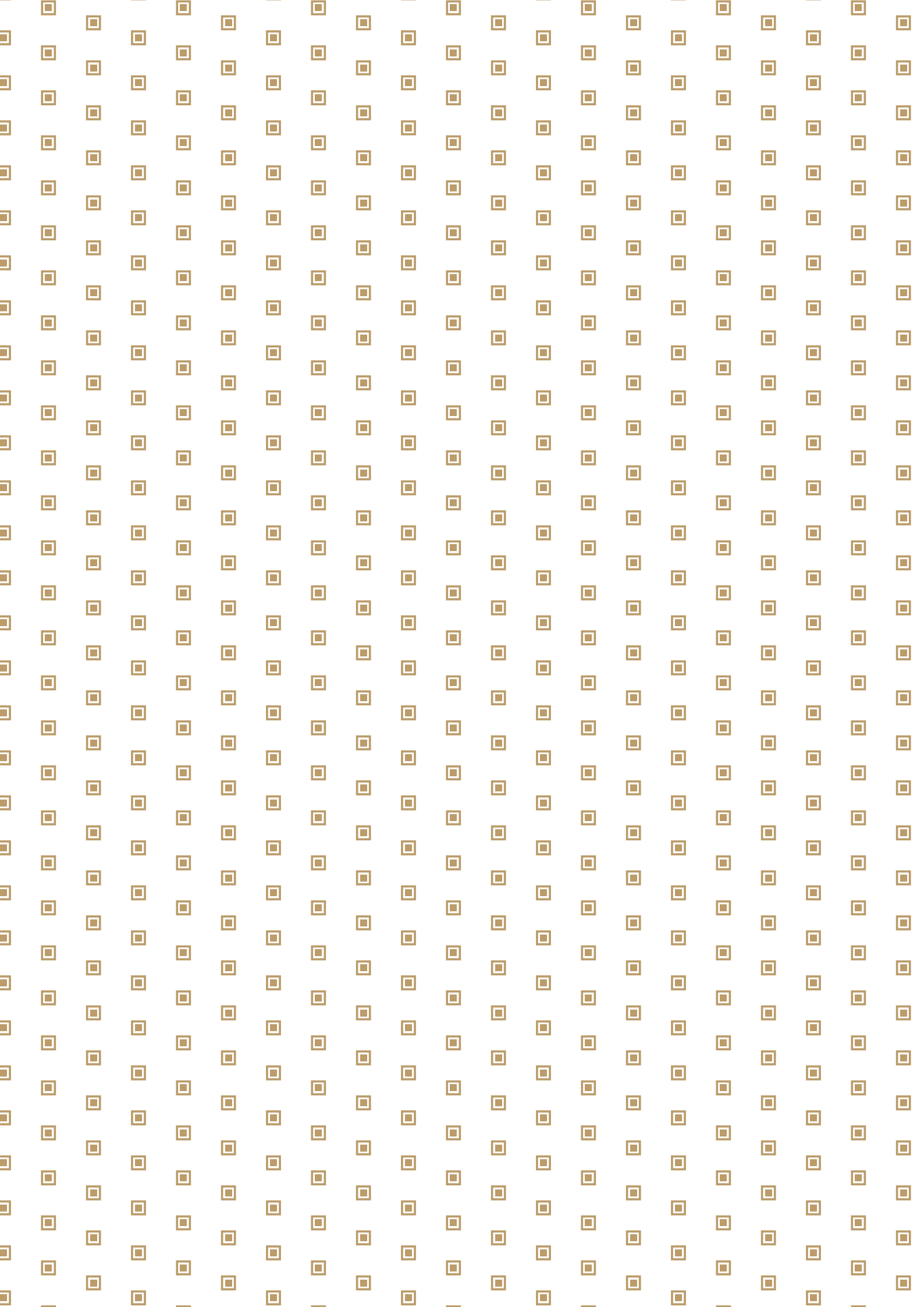
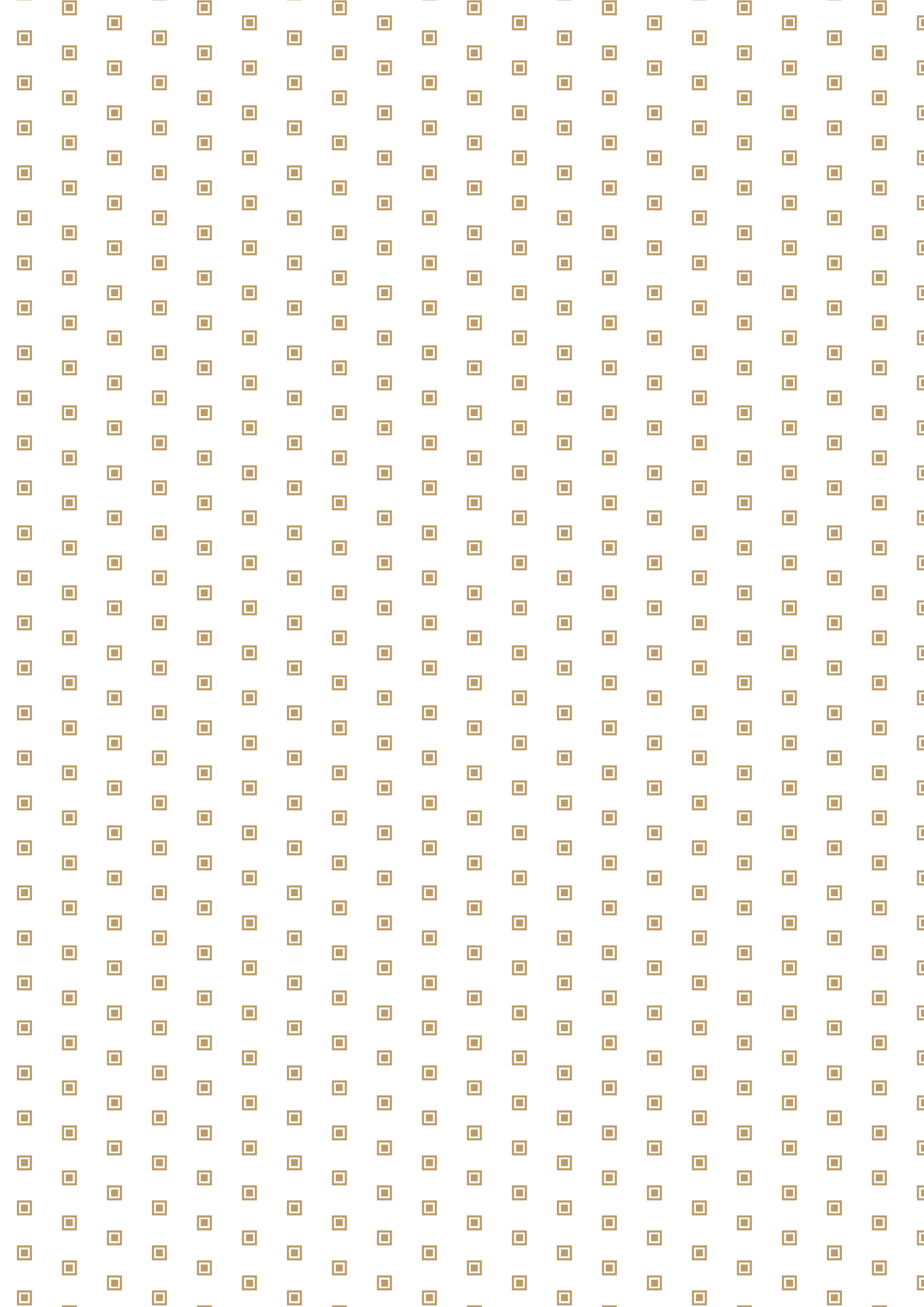


Turkish Glass

Flat Glass
Reference Projects











TurkishGlass is the association representing the glass manufacturers, glass processors and glass exporters in Turkey. Main product groups in **TurkishGlass** are; flat glass, glassware and glass packaging.

Equal in age nearly to that of civilization itself, glass is one of the most ancient and advanced material in world history. With the foundation of the Republic of Turkey, Turkish glass industry has grown day by day and reached a new and brilliant stage.

Today, new glass-based products and applications are used in architecture, construction, automotive, energy generation, distribution and storage, passive and active coatings, smart/hygienic glass packaging, interactive glass household appliances, medicine, biology, pharmaceuticals, agriculture, and anti-radiation products, and anywhere else our imagination takes us. In all its numerous applications, glass enables further innovation and enhances people's life and the environment.

Turkey is one of the top global producer of glass with its huge production capacity, high quality, experience and prestigious projects all over the world.

The main aim of the **TurkishGlass** is to increase the image and awareness of Turkish glass all over the world. Also adding value to the environment while shaping the future with its wide range of products and services that make life easier.

TurkishGlass means

- ▣ **High Quality and Experience**
- ▣ **Export to 175 countries**
- ▣ **Prestigious Projects all over the World**

Follow us on Social Media:

#TurkishGlass

turkishglass.org

CEPA OFFICE

Architectural Design: Öncüoğlu+ACP

Investor: Üstünçelik A.Ş.

Façade Consultant: Emek Mimari

Glass Processor: Çıraylar Cam

Photo: © Modern Sanatlar

İSTANBUL
AIRPORT

6



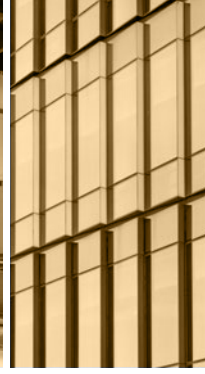
THE MUSEUM
HOTEL ANTAKYA

10



ŞİŞECAM
HEADQUARTERS

14



GLOBAL DREAM
OFFICES

17



IAOIZ NU
PROFESSIONAL
& TECHNICAL
PRIVATE HIGH
SCHOOL

20



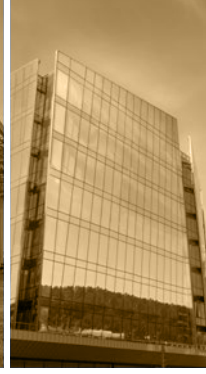
DAKAR CONGRESS
CENTER

24



VADİKÖRÜ

28



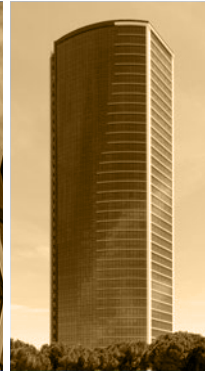
8

İSTANBUL TV
& RADIO TOWER



12

ELLIPSE CENTER
SOFIA



16

BUMERANG
KARTAL



18

KIGALI
MULTIFUNCTIONAL
SPORTS ARENA



22

BORSA
İSTANBUL



26

MERSİN CITY
HOSPITAL



30

FOLKART BLU
ÇEŞME

BROOKLYN
PARK

32

TAI-TUSAŞ
ACADEMY
& HR BUILDING

34

EGE
PERLA

38

OZU
DORM

41

SEA PEARL
RESIDENCE

44

KALKAN ALTES
VILLAS

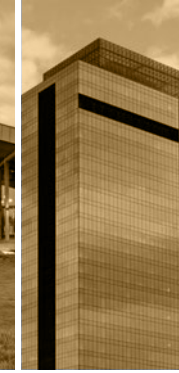
46

SAMSUN
GOLF CLUB

50

TFKB
HEADQUARTERS

54



33

GENERAL
DIRECTORATE
OF STATE
HYDRAULIC
WORKS

36

CONGO KINTELE
CONGRESS
CENTER

40

RADISSON
BLU HOTEL &
CONFERENCE
CENTER

42

NUROL PARK
GÜNEŞLİ

45

BAŞKENT
EMLAK
KONUTLARI

48

EURASIA
TUNNEL
OPERATION
& MAINTENANCE
BUILDING

52

KEMER
LIFE XXIII

COVER KUMPORT

Architectural Design: KG Mimarlık

Investor: Kumport Port Services and Logistics Industry Trade Co.

Glass Processor: Camyapı

Photo: © Büşra Yeltekin

İSTANBUL AIRPORT

 İstanbul, **Turkey**

TEMPERABLE
SOLAR
CONTROL
LOW-E GLASS

LT: 51% g: 29%
LT: 41% g: 27%





Architectural Design: Grimshaw Architects - Nordic Office of Architecture - Haptic Architects

Investor: Cengiz - Kolin - Limak - MAPA - Kalyon Joint Venture Companies

Façade Consultant: Wintech Façade Engineering Consultance

Glass Processor: Antcam - Ardıç Cam - Camyapı - Yakut Cam - Yıldız Cam

İSTANBUL TV & RADIO TOWER

TINTED FLOAT
GLASS GREY

LAMINATED
LOW-E GLASS

 Istanbul, **Turkey**





Photos: © Ahmet Can Zaim

Architectural Design: Melike Altınışık Architects – MAA
Investor: Republic of Turkey Ministry of Transport and Infrastructure
Façade Consultant: Newtecnic
Glass Processor: Trakya Group Glass

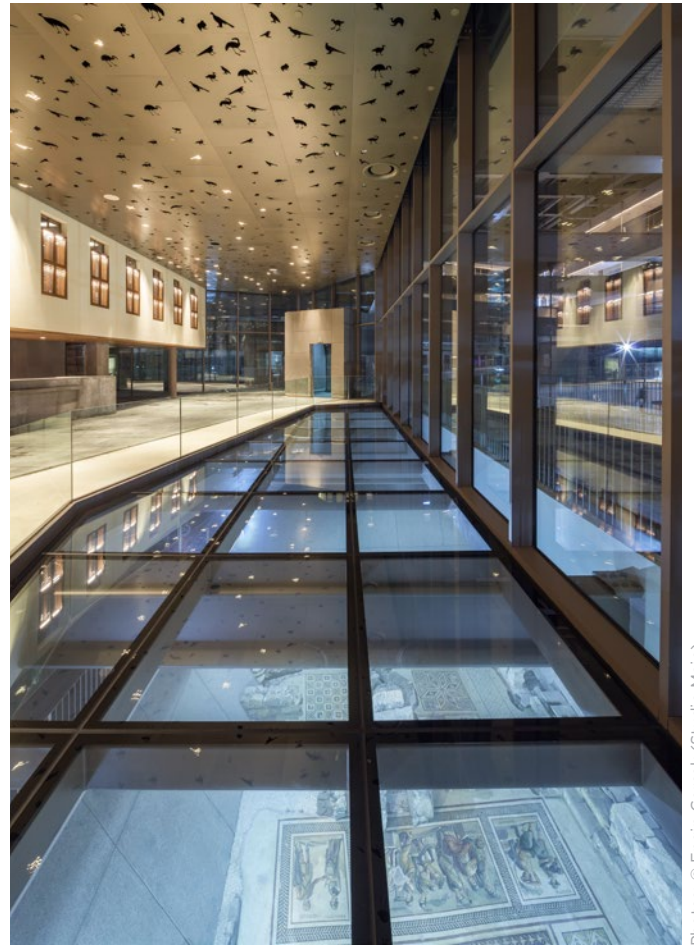
THE MUSEUM HOTEL ANTAKYA

TEMPERABLE
LOW-E GLASS
LT: 71% g: 53%

ULTRA CLEAR
LAMINATED
GLASS

 Hatay, **Turkey**





Architectural Design: EAA - Emre Arolat Architecture
Investor: Asf Tourism Ltd.
Façade Consultant: Axis Façades
Glass Processor: Camyapı

ELLIPSE CENTER SOFIA

TEMPERABLE
SOLAR
CONTROL
LOW-E GLASS

LT: 58% g: 32%

 Sofia, **Bulgaria**





Photos: © BV Studio

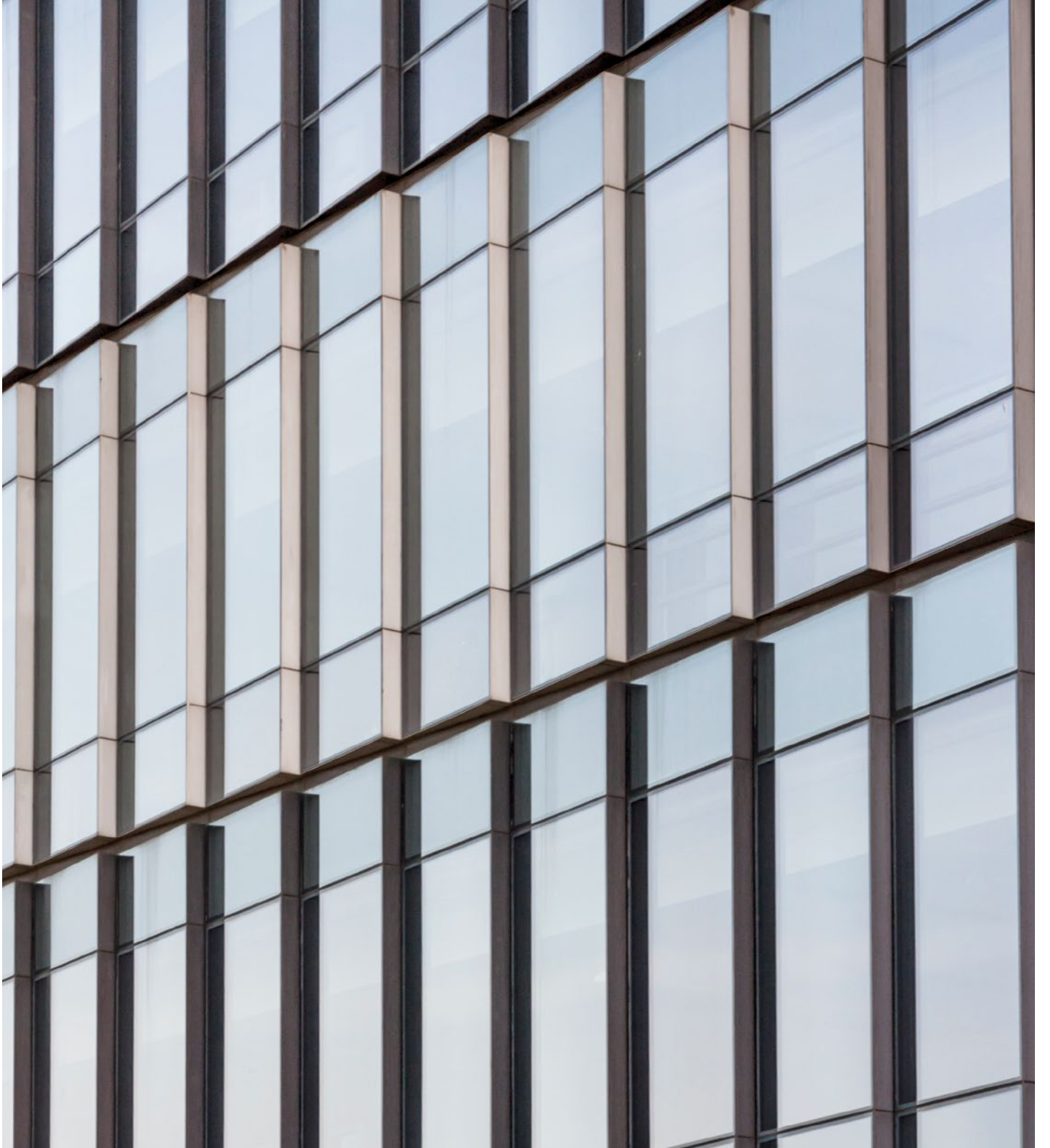
Architectural Design: LP Consult
Investor: Ilpa Development

ŞİŞECAM HEADQUARTERS

TEMPERABLE
SOLAR
CONTROL
LOW-E GLASS

LT: 62% g: 44%

 Istanbul, **Turkey**





Architectural Design: SOM + Dizayn Grup
Investor: İŞ GYO
Façade Consultant: Karakalem Consultancy
Glass Processor: Yıldız Cam

BUMERANG KARTAL

TEMPERABLE
SOLAR
CONTROL
LOW-E GLASS

LT: 40% g: 28%

 İstanbul, **Turkey**



Photo: © Modern Sanatlar

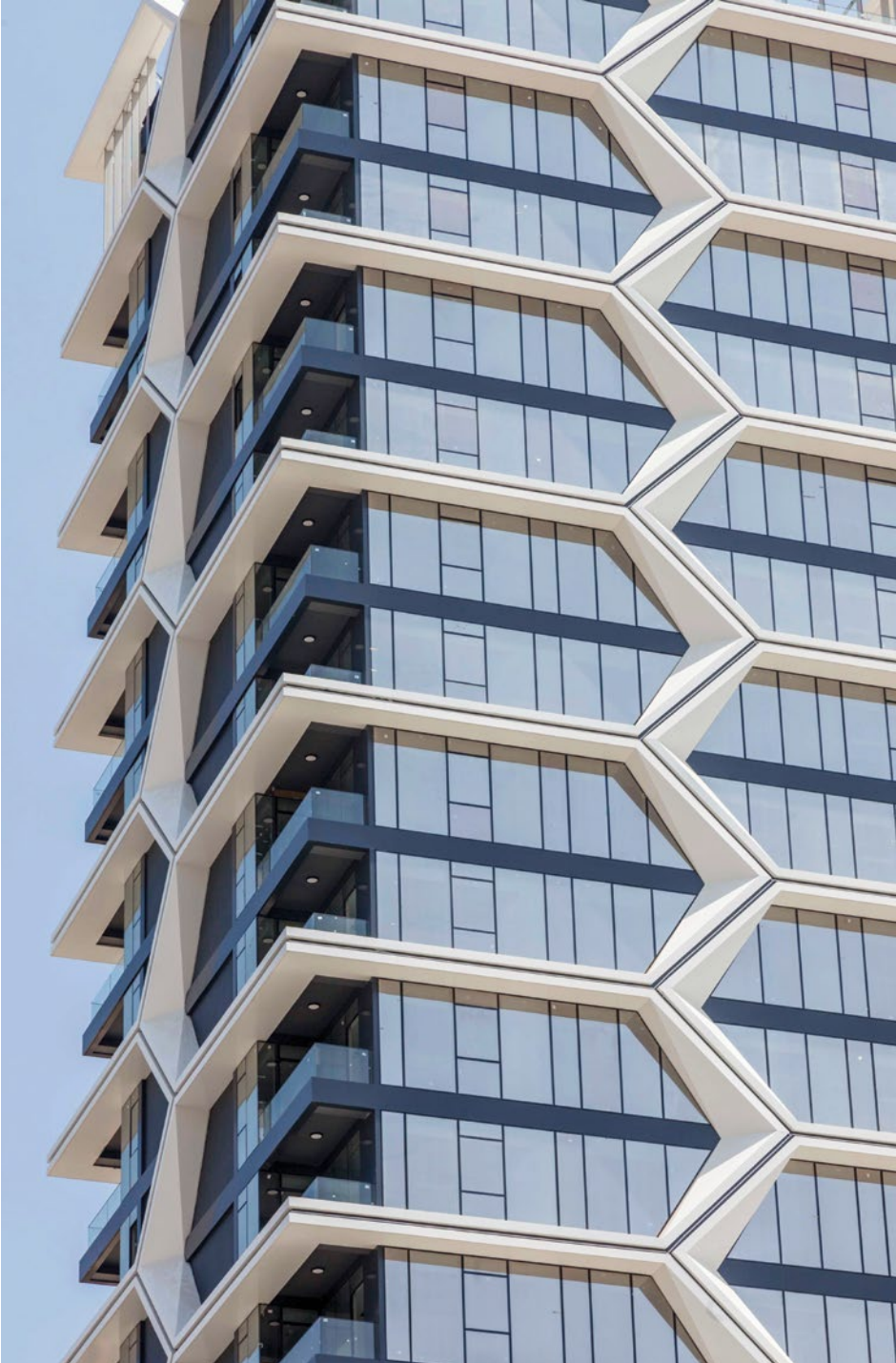
Architectural Design: AE Mimarlık
Investor: Özkartallar Group
Façade Consultant: Façade Design Factory
Glass Processor: Yıldız Cam

TEMPERABLE
SOLAR
CONTROL
LOW-E GLASS

LT: 41% g: 27%

GLOBAL DREAM OFFICES

📍 Mersin, **Turkey**



Architectural Design: Yüce Architects

Investor: Ekinci İnşaat

Glass Processor: Adana Cam

KIGALI MULTIFUNCTIONAL SPORTS ARENA

TEMPERABLE
SOLAR
CONTROL
LOW-E GLASS

LT: 58% g: 32%

📍 Kigali, **Rwanda**





Photo: © Emre Dörter

Architectural Design: Yazgan Design Architecture Inc.

Investor: Summa Inc.

Glass Processor: Çıraylar Cam

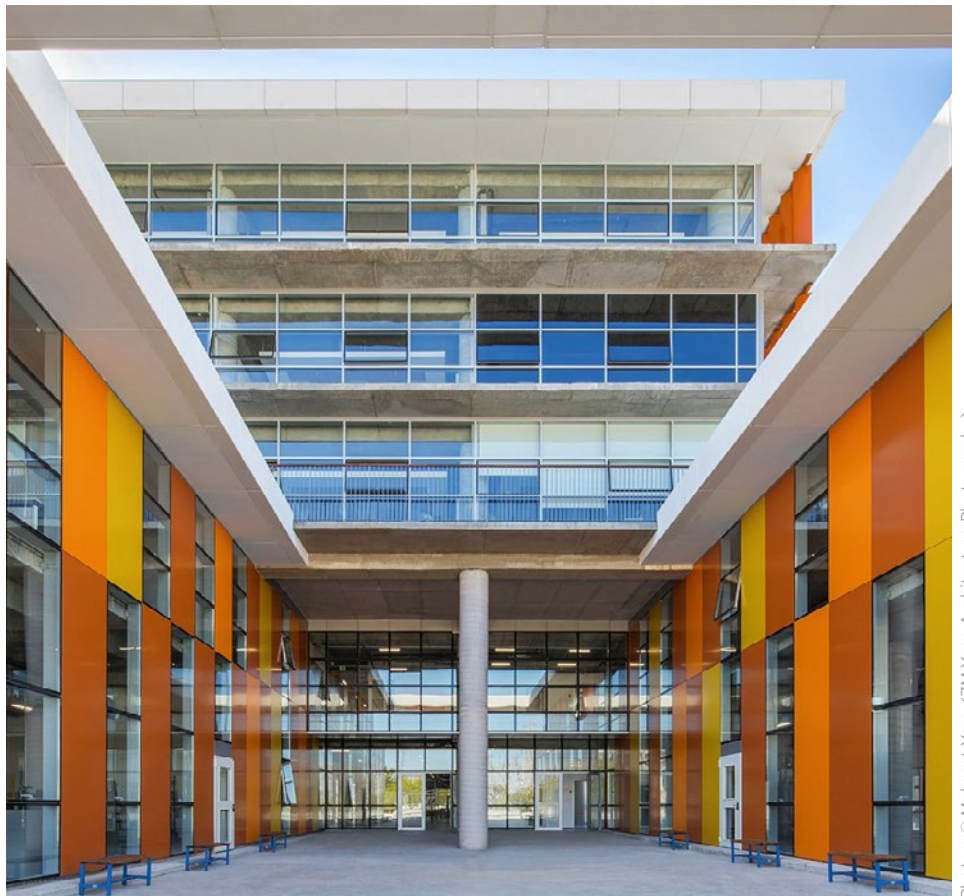
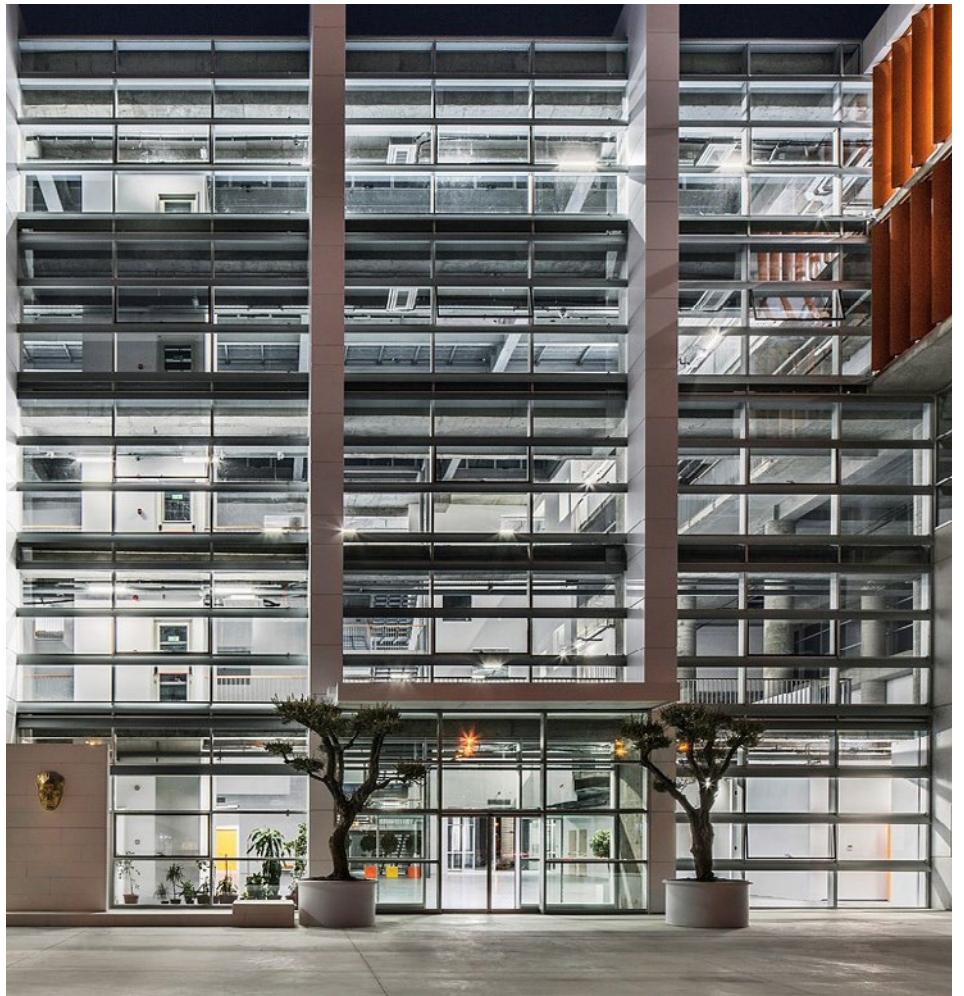
IAOIZ NU PROFESSIONAL & TECHNICAL PRIVATE HIGH SCHOOL

TEMPERABLE
SOLAR
CONTROL
LOW-E GLASS

LT: 62% g: 44%

 İzmir, **Turkey**





Photos: © Mehmet Yasa (ZM Yasa Architecture Photography)

Architectural Design: M+D Architecture
Investor: Izmir Atatürk Organized Industrial Zone Management
Glass Processor: Dost Cam

BORSA İSTANBUL

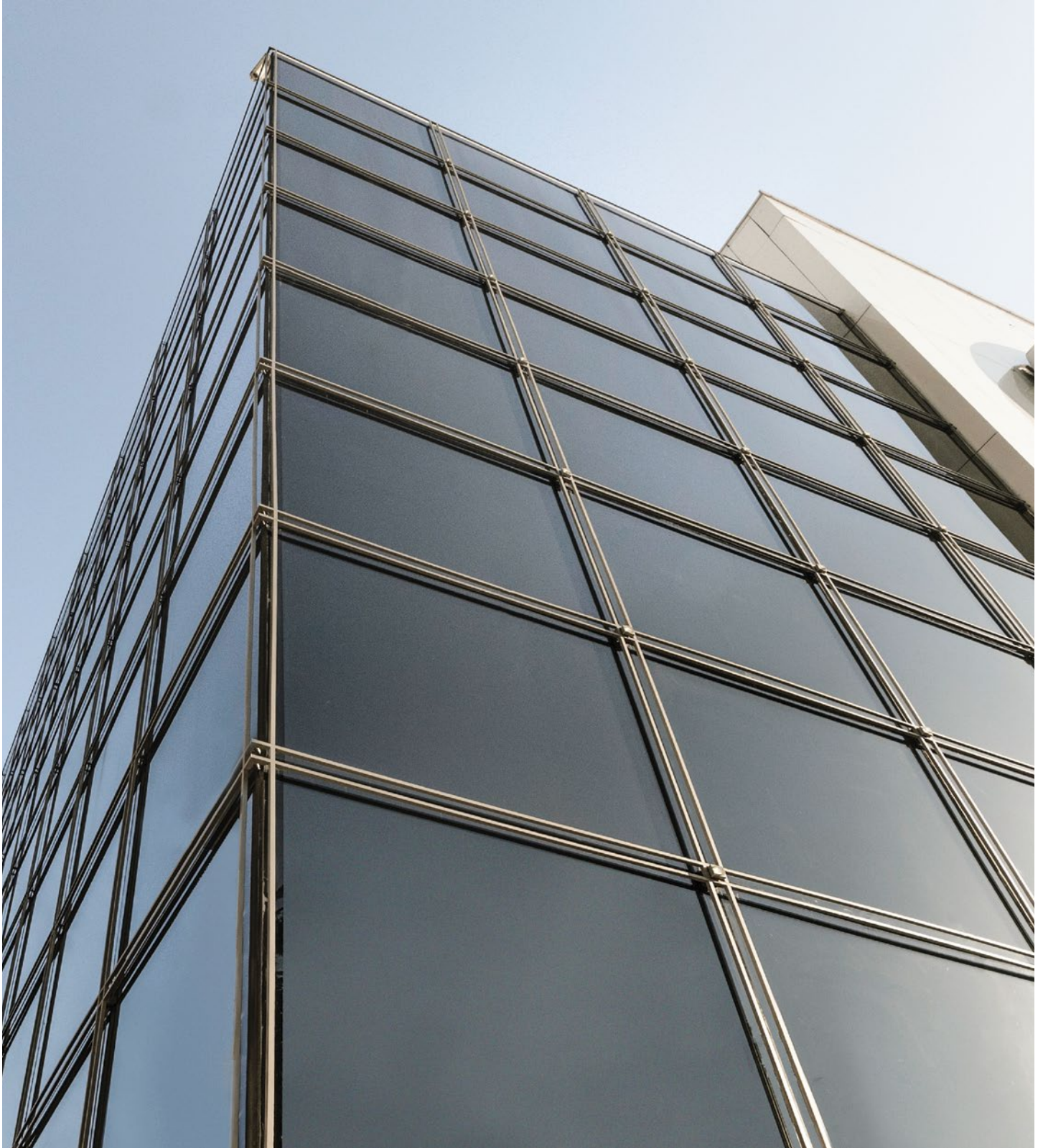
 İstanbul, **Turkey**

TEMPERABLE
SOLAR
CONTROL
LOW-E GLASS

LT: 50% g: 33%

TEMPERABLE
LOW-E GLASS

LT: 71% g: 53%





Architectural Design: İki Design Group
Investor: Kuyumcukent Real Estate Investments Corporation
Façade Consultant: Axis Façades
Glass Processor: Camyapı - Sar Cam

DAKAR CONGRESS CENTER

TEMPERABLE
SOLAR
CONTROL
LOW-E GLASS

LT: 62% g: 44%

 Dakar, **Senegal**





Architectural Design: Tabanlıoğlu Architects
Investor: Summa Inc.

MERSİN CITY HOSPITAL

TEMPERABLE
SOLAR
CONTROL
LOW-E GLASS
BLUE

LT: 39% g: 28%

 Mersin, **Turkey**





Architectural Design: NKY Architects & Engineers
Investor: Republic of Turkey Ministry of Health - Dia Construction
Façade Consultant: Axis Façades
Glass Processor: Antcam

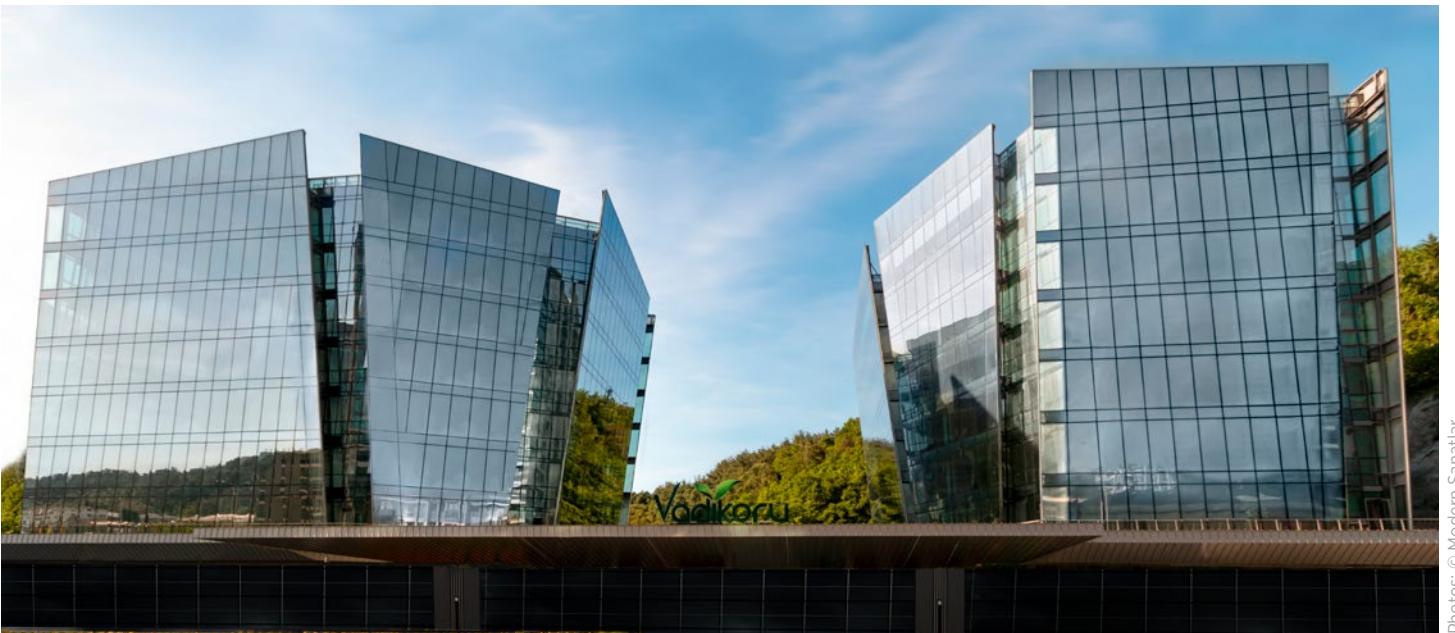
VADİKORU

 İstanbul, **Turkey**

TEMPERABLE
SOLAR
CONTROL
LOW-E GLASS

LT: 70% g: 37%
LT: 41% g: 27%





Architectural Design: Iki Design Group
Investor: Invest Group
Glass Processor: Yıldız Cam

FOLKART BLU ÇEŞME

 İzmir, **Turkey**

TEMPERABLE
SOLAR
CONTROL
LOW-E GLASS

LT: 50 % g: 33%





Architectural Design: Dilekci Architects
Investor: Folkart Yapı
Façade Consultant: Bağlan Engineering
Glass Processor: Aras Cam

BROOKLYN PARK

 İstanbul, **Turkey**

TEMPERABLE
SOLAR
CONTROL
LOW-E GLASS

LT: 62% g: 44%

REFLECTIVE
GLASS GREY



Photo: © Modern Sanatlar

Architectural Design: Çamoğlu Architecture

Investor: Pana - Selimoğlu Yapı - SRP Yapı

Façade Consultant: Zent Consultancy

Glass Processor: Cam-Saş

TEMPERABLE
SOLAR
CONTROL
LOW-E GLASS

LT: 50% g: 27%

GENERAL DIRECTORATE OF STATE HYDRAULIC WORKS

📍 Ankara, **Turkey**



Photo: © Modern Sanatlar

Architectural Design: Uz Architecture Atelier
Investor: The General Directorate of State Hydraulic Works
Façade Consultant: MRS Architecture & Consulting
Glass Processor: Ardiç Cam

TAI-TUSAŞ ACADEMY & HR BUILDING

TEMPERABLE
SOLAR
CONTROL
LOW-E GLASS

LT: 50 % g: 33%

 Ankara, **Turkey**





Architectural Design: Hatırlı Architecture LLC
Investor: Turkish Aerospace
Glass Processor: Çıraylar Cam

CONGO KINTELE CONGRESS CENTER

TEMPERABLE
SOLAR
CONTROL
LOW-E GLASS

LT: 50% g: 33%

 Kintele, **Congo**





Photos: © Emre Dörter

Architectural Design: Avcı Architects
Investor: Republic of Congo

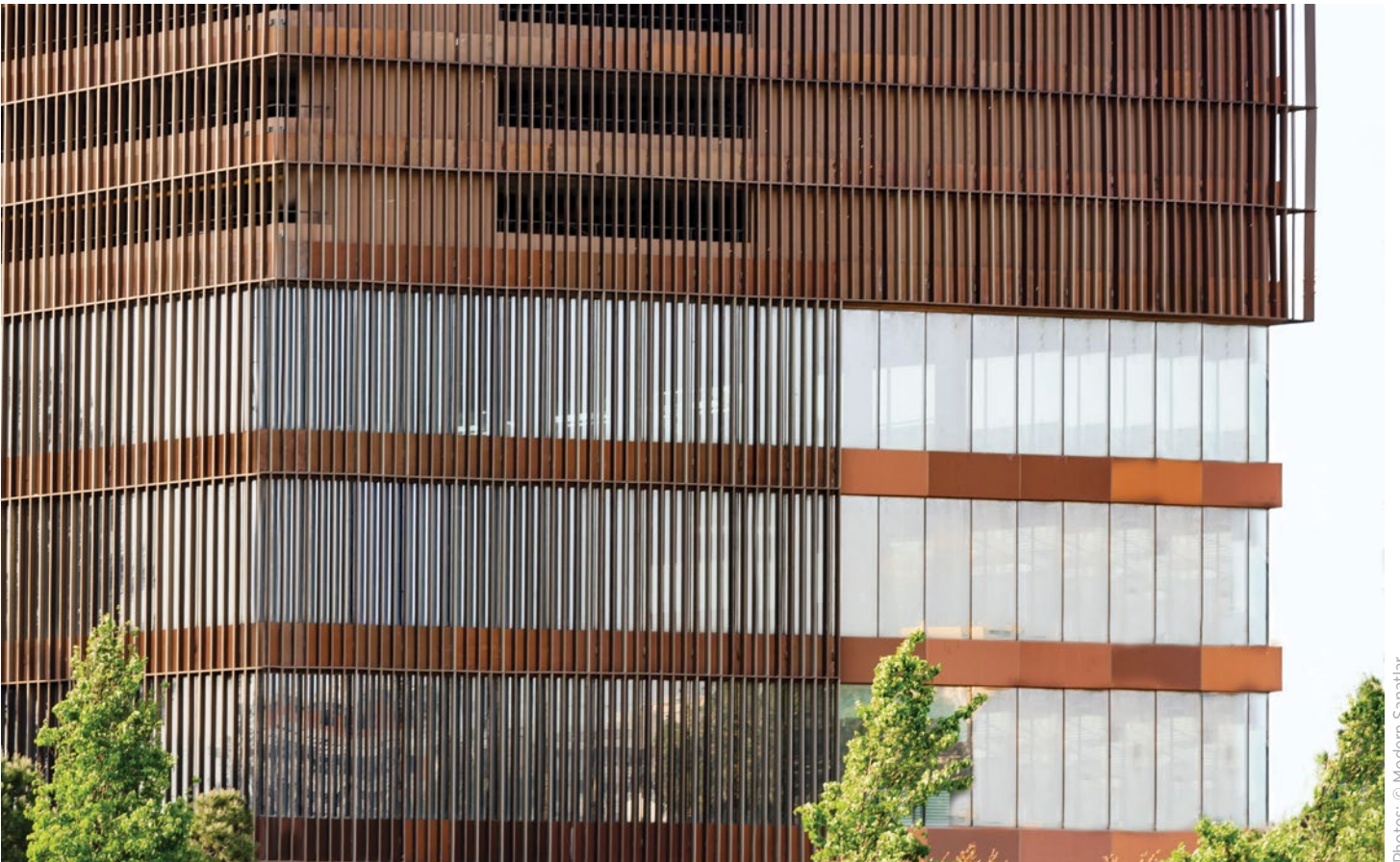
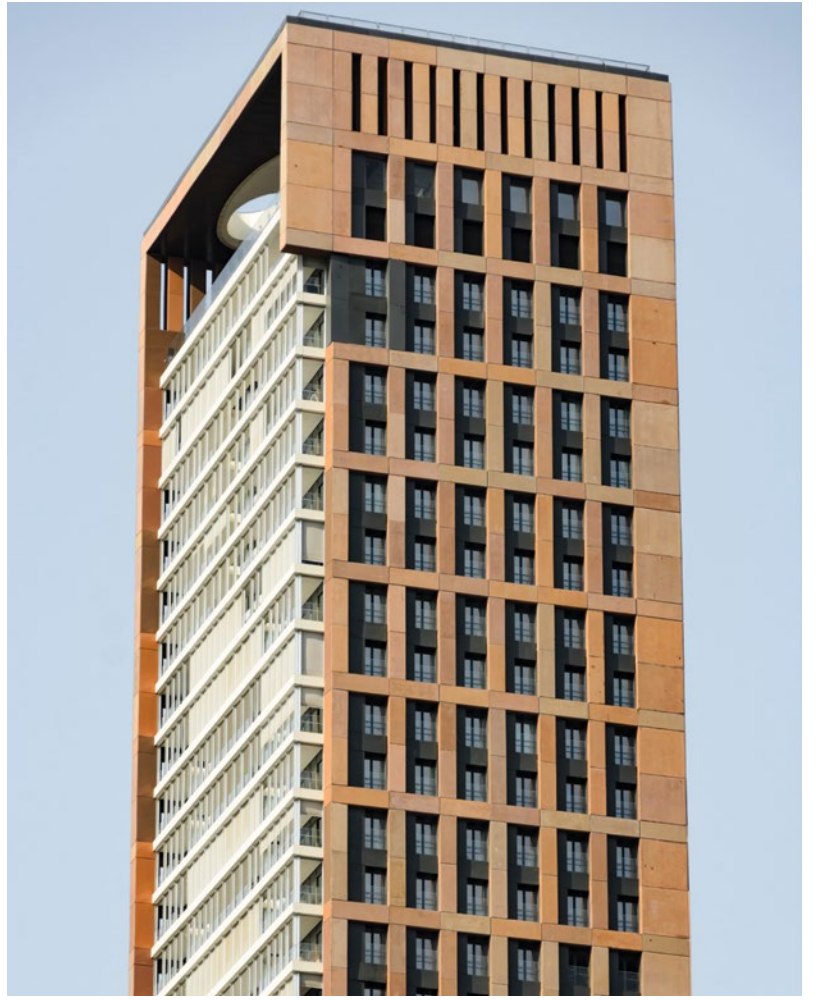
EGE PERLA

 İzmir, **Turkey**

TEMPERABLE
SOLAR
CONTROL
LOW-E GLASS

LT: 50 % g: 33%





Architectural Design: EAA - Emre Arolat Architecture
Investor: İŞ REIT
Façade Consultant: Axis Façades
Glass Processor: Dostcam

RADISSON BLU HOTEL & CONFERENCE CENTER

TEMPERABLE
SOLAR
CONTROL
LOW-E GLASS

LT: 50% g: 33%

 Niamey, **Niger**



Photo: © Emre Dörter

Architectural Design: Avcı Architects

Investor: Summa Inc.

Glass Processor: Yıldız Cam

TEMPERABLE
SOLAR
CONTROL
LOW-E GLASS

LT: 50% g: 33%

OZU DORM

İstanbul, **Turkey**



Photos: © Nami Hatırlı

Architectural Design: Hatırlı Architecture LLC
Investor: Ozyegin University
Glass Processor: Anadolu Cam

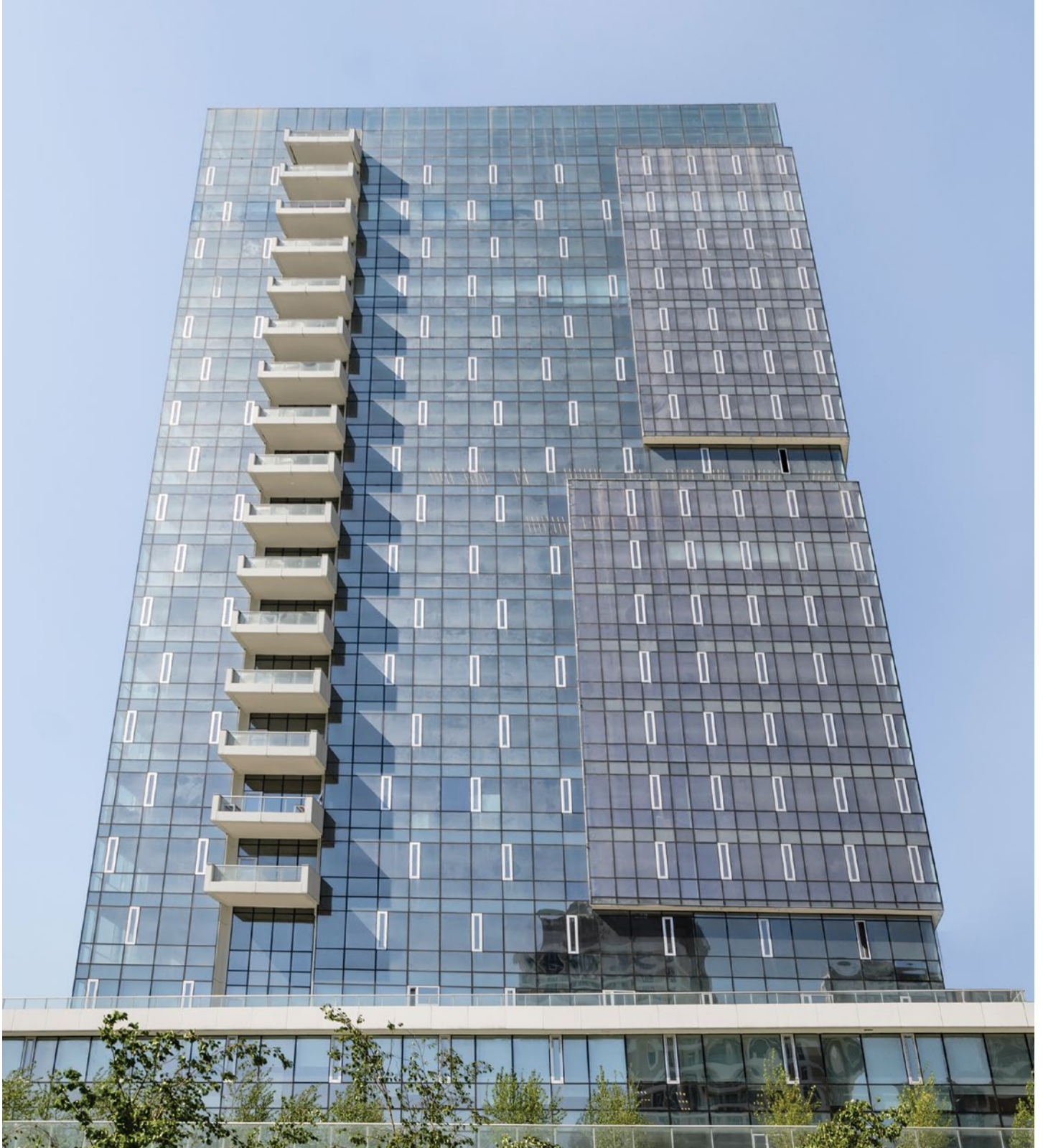
NUROL PARK GÜNEŞLİ

 İstanbul, **Turkey**

TEMPERABLE
SOLAR
CONTROL
LOW-E GLASS

LT: 50% g: 33%

ULTRA CLEAR
FLOAT GLASS





Architectural Design: Öncüoğlu+ACP
Investor: NuroI GYO
Glass Processor: Yıldız Cam

SEA PEARL RESIDENCE

TEMPERABLE
SOLAR
CONTROL
LOW-E GLASS

LT: 62% g: 44%

 Istanbul, **Turkey**



Photo: © Modern Samatlar

Architectural Design: Evrenol Architects

Investor: Kuzu Group

Façade Consultant: Axis Façades

Glass Processor: Camyapı - Temka Cam

TEMPERABLE
SOLAR
CONTROL
LOW-E GLASS

LT: 70% g: 37%

BAŞKENT EMLAK KONUTLARI

Ankara, Turkey



Photo: © Modern Samatlar

Architectural Design: Sabri Paşayığıt Architects

Investor: Emlak Konut GYO

Façade Consultant: Baymim Cephe Danışmanlık & Bağlan Mimarlık

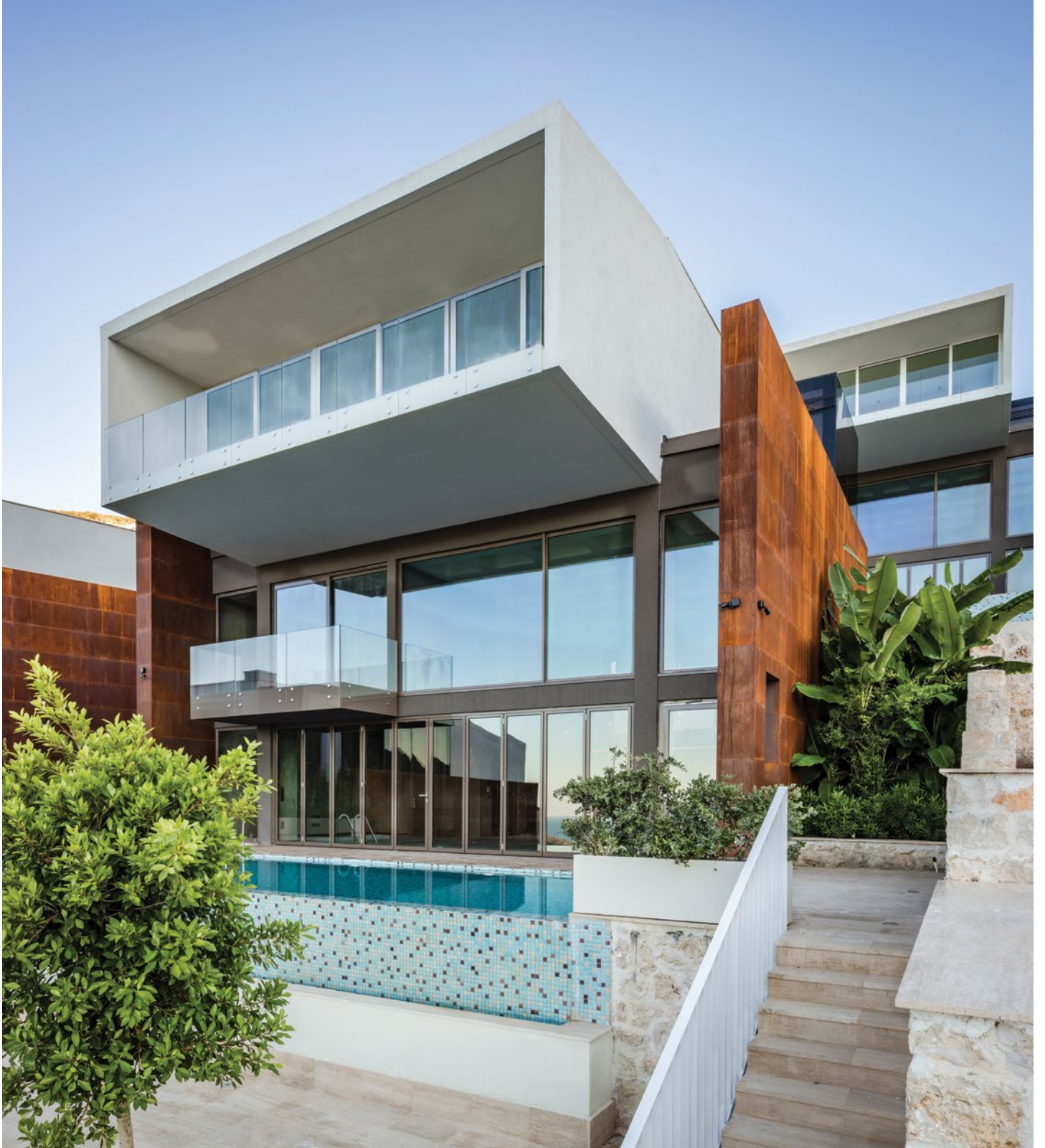
Glass Processor: Camplaza

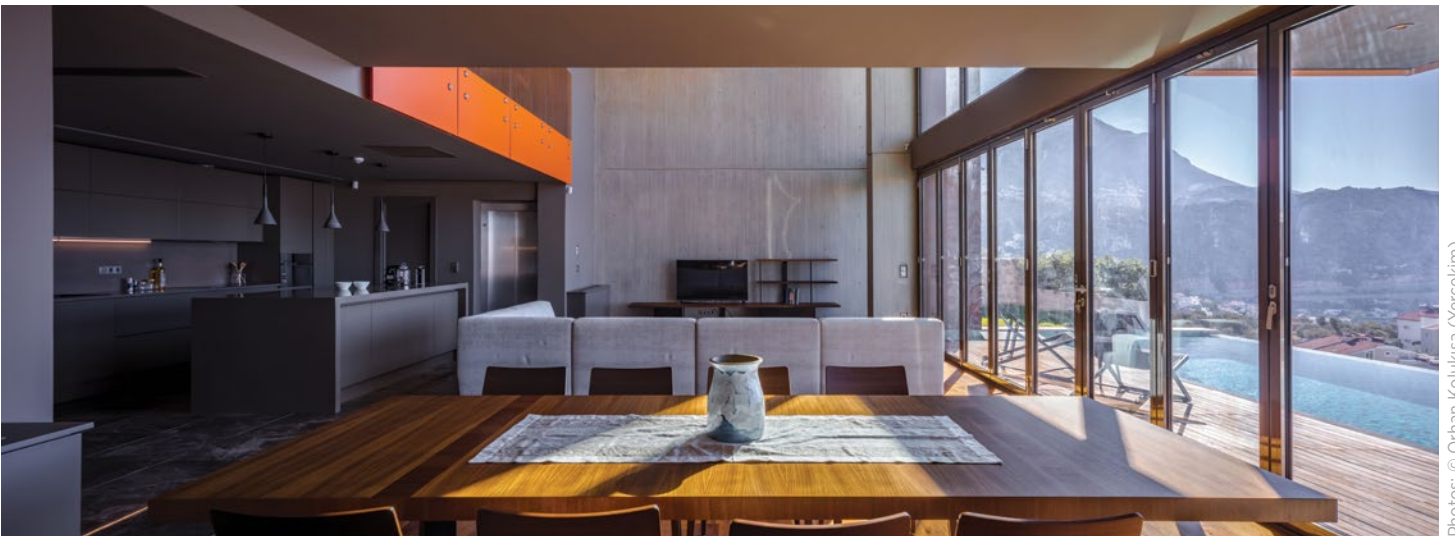
KALKAN ALTES VILLAS

TEMPERABLE
SOLAR
CONTROL
LOW-E GLASS

LT: 70% g: 37%

 Antalya, **Turkey**





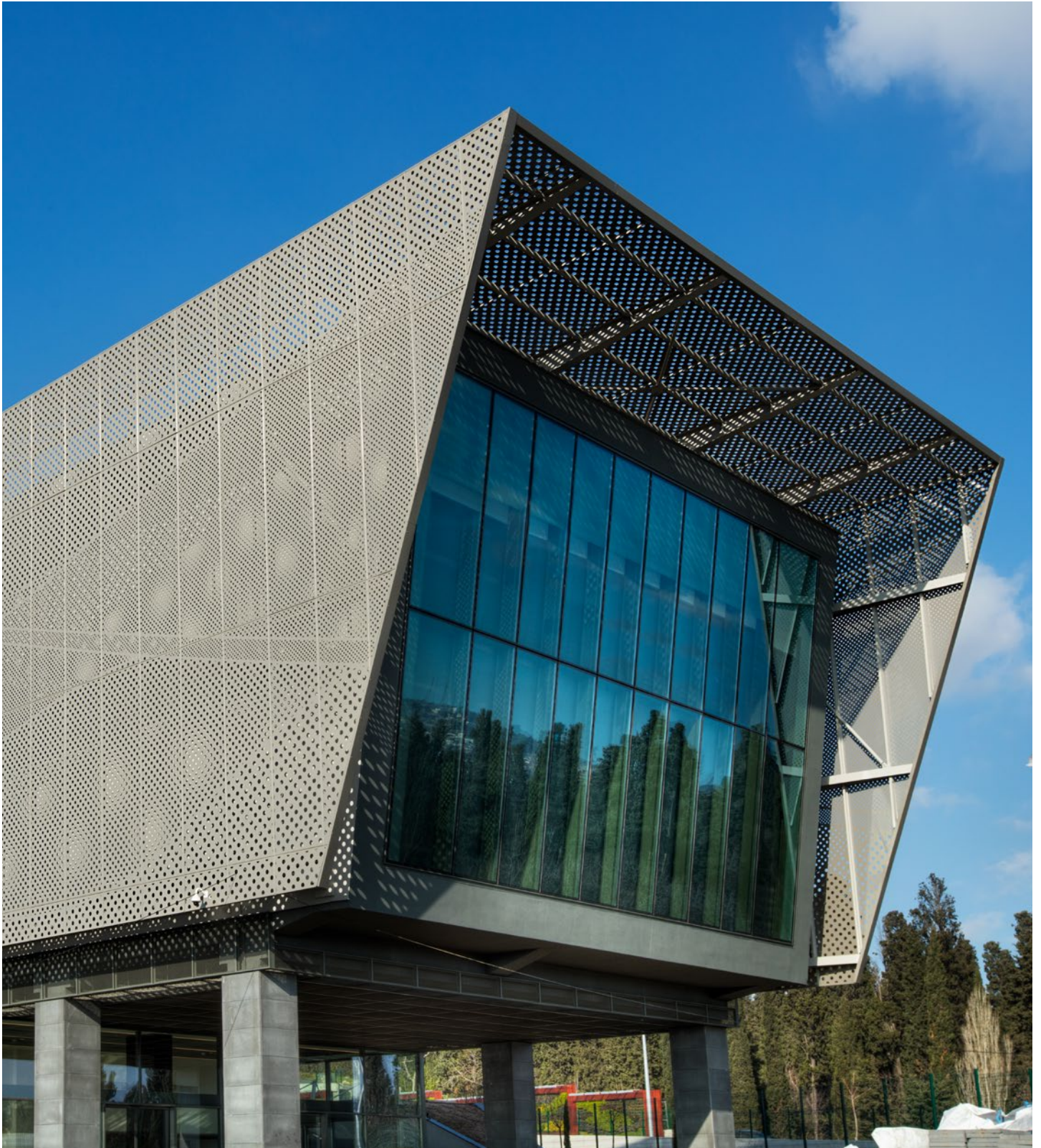
Architectural Design: Yazgan Design Architecture
Investor: Altes Aluminium Limited Company
Glass Processor: Ardıç Cam

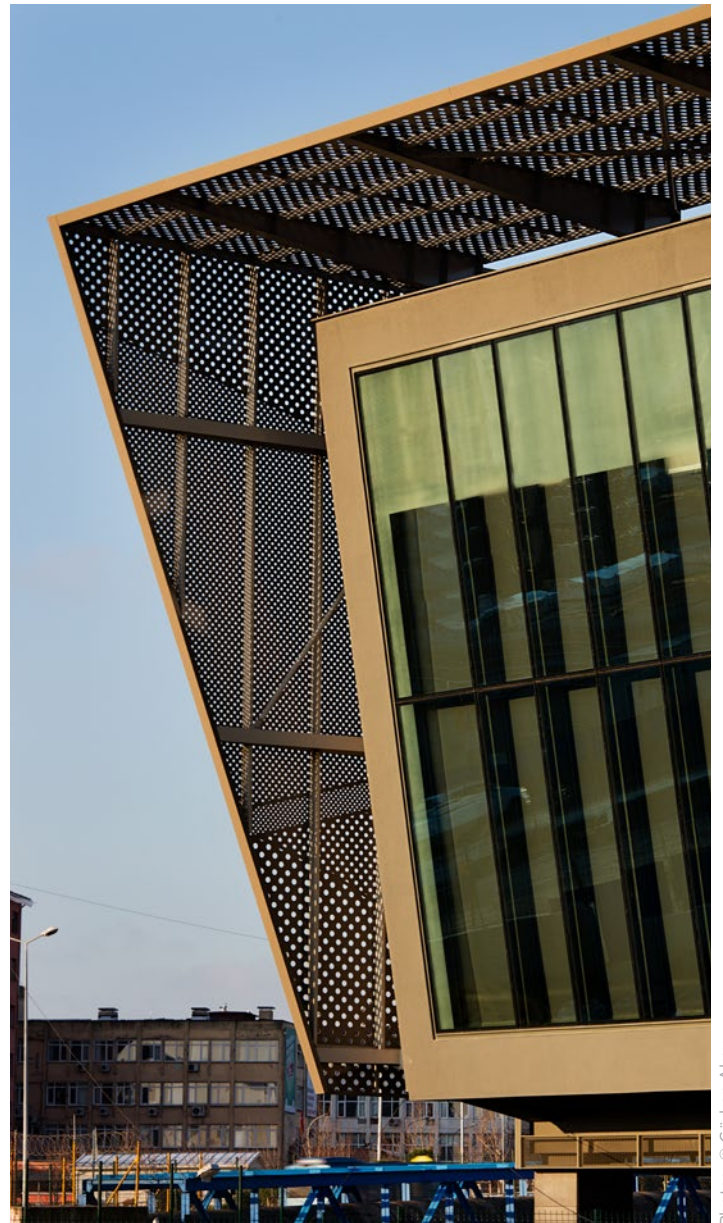
EURASIA TUNNEL OPERATION & MAINTENANCE BUILDING

TEMPERABLE
SOLAR
CONTROL
LOW-E GLASS

LT: 62% g: 44%
LT: 50% g: 33%

 Istanbul, **Turkey**





Architectural Design: GMW MIMARLIK

Investor: Republic of Turkey Ministry of Transport and Infrastructure, Eurasia Tunnel Co.

Glass Processor: Alcam

SAMSUN GOLF CLUB

 Samsun, **Turkey**

TEMPERABLE
LOW-E GLASS
LT: 71% g: 53%





Photo: © Orhan Koluksa (Yerçekim)

Architectural Design: CAA Studio
Investor: Samsun Municipality
Glass Processor: Resman Cam

KEMER LIFE XXIII

 Istanbul, **Turkey**

TEMPERABLE
LOW-E GLASS
LT: 71% g: 53%





Architectural Design: KPM - Kerem Piker Architecture
Investor: Metal Yapı Konut
Façade Consultant: Tosca Façade
Glass Processor: Yıldız Cam

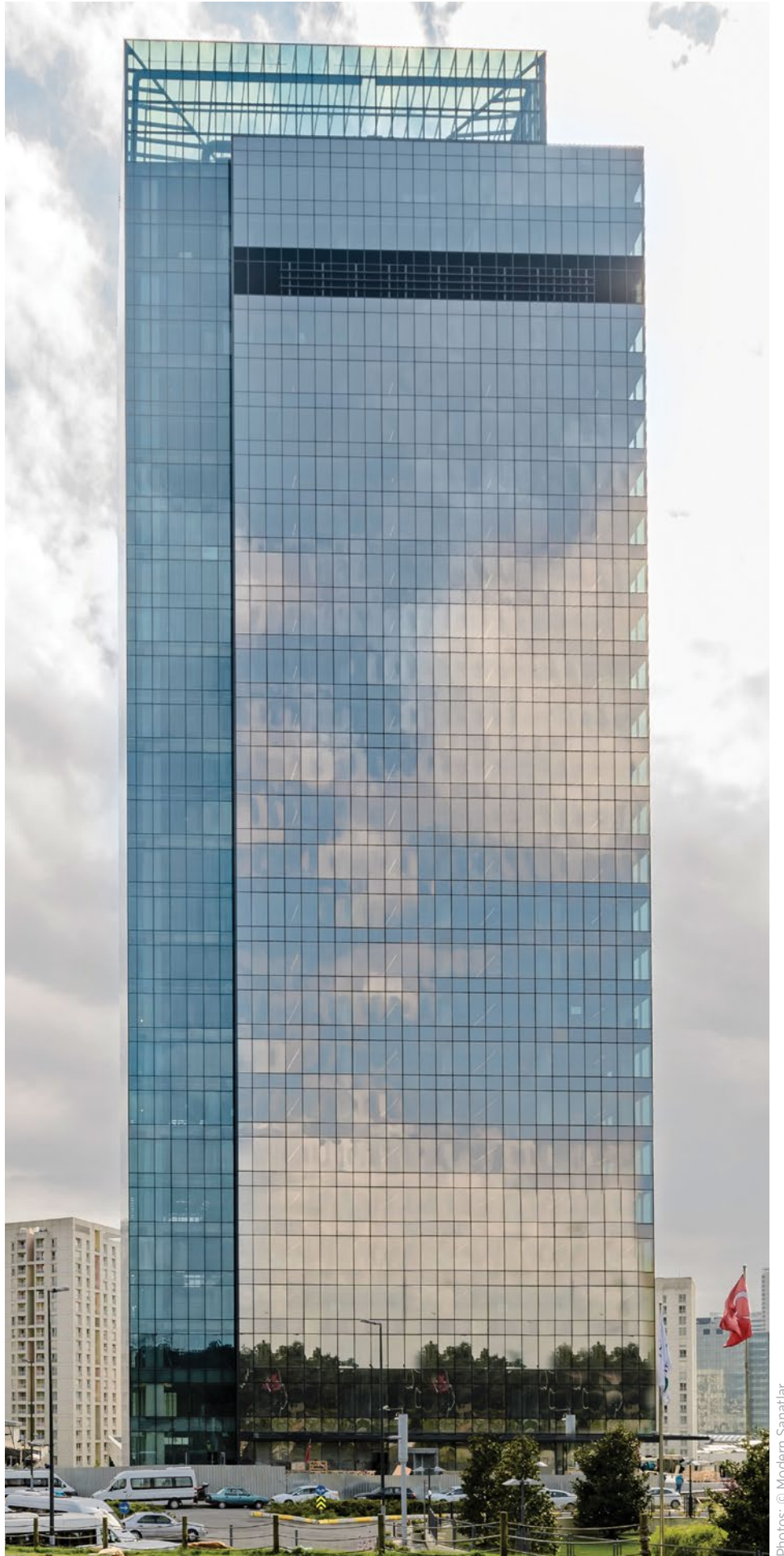
TFKB HEADQUARTERS

 Istanbul, **Turkey**

TEMPERABLE
SOLAR
CONTROL
LOW-E GLASS

LT: 41% g: 27%
LT: 50% g: 27%





Architectural Design: AS/OS Architecture & L35 Architects
Investor: Türkiye Finans Participation Bank
Glass Processor: Yakut Cam

